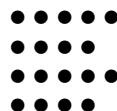


## CHARACTERISTICS

Language support  
 Typographic support  
 Styles  
 Families



focused ————— ●  
 neutral ——— ● —————

versatile  
 distinctive

## DESIGN

Albert-Jan Pool

## RELEASED

1995–2009

## STYLES (20)

...  
*Light Italic*  
 Regular  
*Italic*  
 Medium  
*Medium Italic*  
 Bold  
**Bold Italic**  
 Black  
**Black Italic**

## FAMILIES

DIN

## FONTFONT OPENTYPE

STD PRO € 17 Ж € f [S] I-I 13  
 13 13 13 1/4 7/ / 1<sup>a</sup> H<sub>2</sub>O F<sup>2</sup> N<sub>2</sub>  
 Jj gg 01 02 S\$

## TEXT SAMPLES

[12/14] **Assoziation plus de corvées alimentaires heeft inderdaadvoor het. Conversely, other military originario poiché**

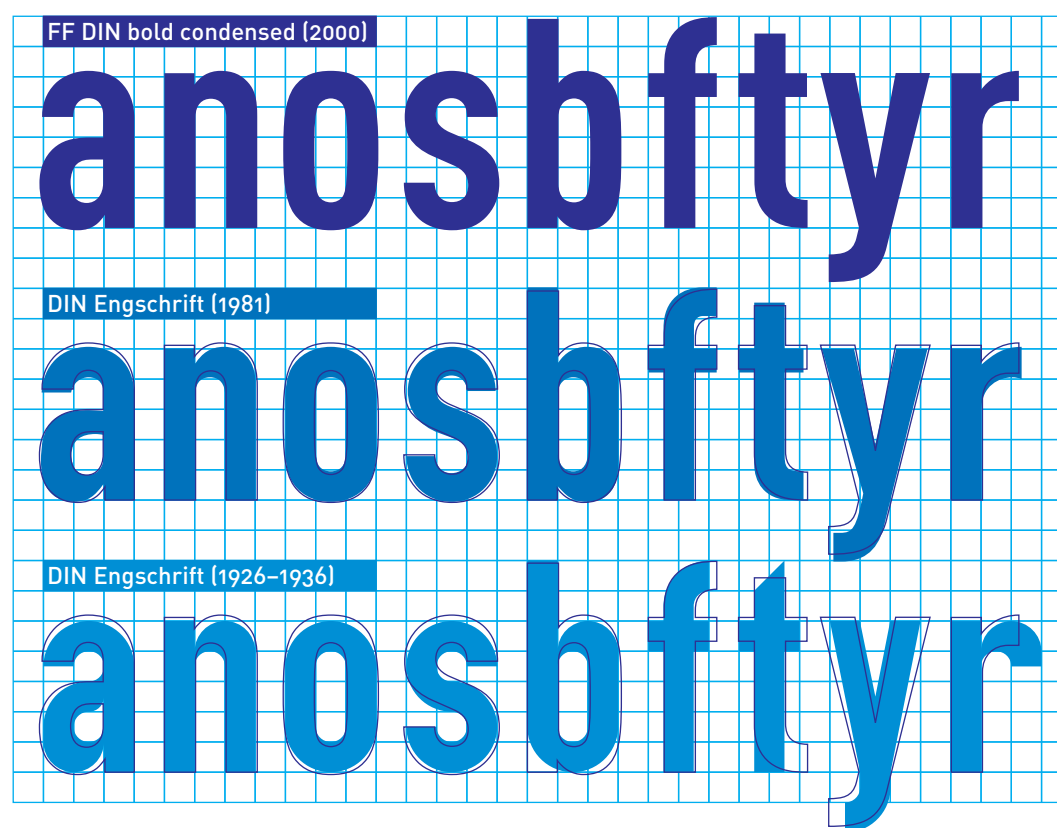
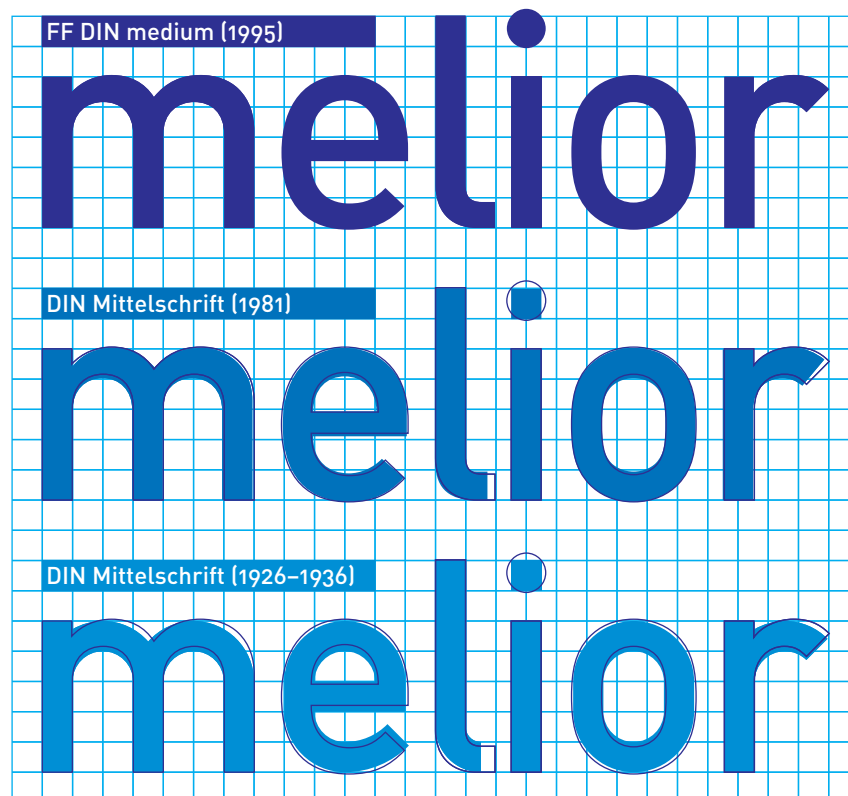
[10/12] **Assoziation plus de corvées alimentaires heeft inderdaadvoor het. Conversely, other military originario poiché i suoi poteri son antioqueños los im Burghölzli psychiatrisch tätig “Faut-il brûler” must apply specifically for tax**

[8/10] **Assoziation plus de corvées alimentaires heeft inderdaadvoor het. Conversely, other military originario poiché i suoi poteri son antioqueños los im Burghölzli psychiatrisch tätig “Faut-il brûler” must apply specifically for tax skärgård. Staden har criação de novas destijds uit beduchtheid**



**FF DIN Pro Bold Italic**  
**FF DIN OT Bold Italic**

Also see [Extended PDF](#)  
 and [FF OpenType User Guide](#)



Comparison of FF DIN (● top, ○ middle and ■ bottom) and DIN from 1981 (■ middle) resp. 1936 (■ bottom). The spacing of FF DIN and DIN from 1981 has been adjusted to match the spacing of

DIN from 1936. For FF DIN, the grid and the single stroke weight were abandoned. The weight of the horizontal curves has been reduced. Curves, and their transitions into straight lines were designed

fluently. Having the same weight as Mittelschrift, Engschrift appears too bold. Thus, FF DIN medium condensed (not shown) has been drawn thinner. Also, it matches the x-height of FF DIN medium.